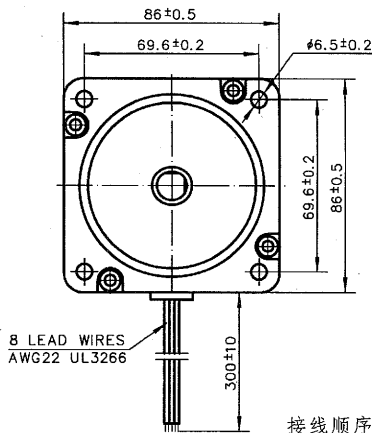
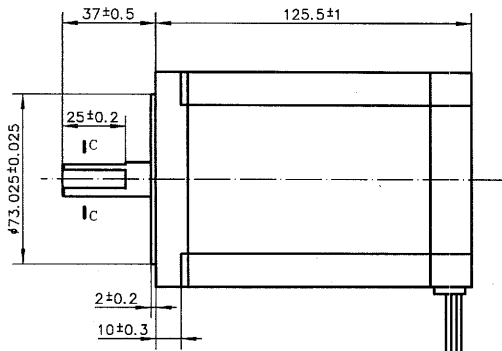
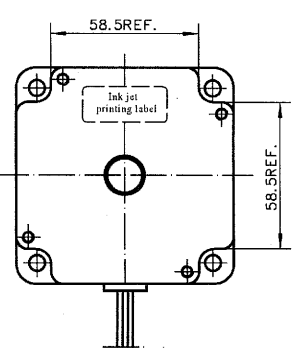
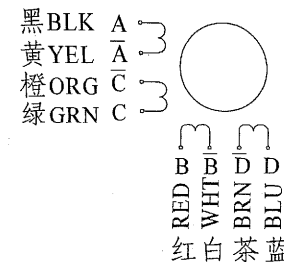


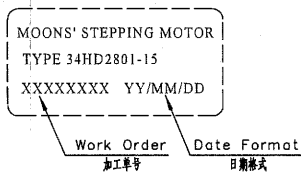
4611110008643



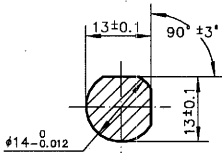
接线图 Wiring Diagram



铭牌 Label Detail

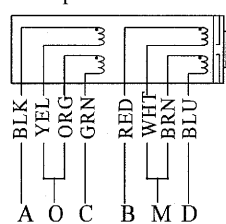


C-C

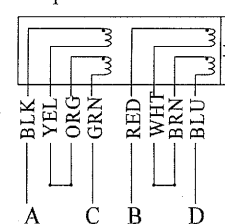


接线顺序图 Connection Diagram

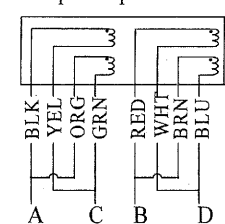
单极性 Uni-polar



双极性串联 Bi-polar series



双极性并联 Bi-polar parallel



规格 Specifications

相数 Number of Phase	4					
步距角 Step Angle	1.8°					
转子惯量 Rotor Inertia	2750g.cm ²					
电机重量 Motor Weight	3800g					
绝缘等级 Insulation Class	B(130° C)					
规格 Specification	相数	每相电阻 欧姆 ± 15%	每相电感 毫亨 ± 20%	额定电流 安培	额定电压 伏特	保持力矩(最小值) 牛顿.米(盎司.英寸)
接线方式 Connection	Number of phase	Resistance per phase ohm ± 10%	Inductance per phase mH ± 20%	Rated current A	Rated voltage V	Holding torque N.m(oz.in) Min.
单极性 Uni-polar	4	0.97	5.4	4.0	3.88	6.4(906)
双极性串联 Bi-polar series	2	1.94	21.6	2.8	5.43	8.9(1260)
双极性并联 Bi-polar parallel	2	0.485	5.4	5.6	2.72	8.9(1260)

励磁顺序 vs. 旋转方向 Exciting Sequence vs. Direction of Rotation

单极性整步
Uni-polar full step

STEP	A	B	C	D	O	M
1	-	-	-	-	+	+
2	-	-	-	-	+	+
3	-	-	-	-	+	+
4	-	-	-	-	+	+

双极性整步
Bi-polar full step

STEP	A	B	C	D
1	+	+	-	-
2	-	+	+	-
3	-	-	+	+
4	+	-	-	+

从安装面看为顺时针方向
Clockwise view from mounting side

保 密

Unit: mm
第一角画法
FIRST ANGLE METHOD
未注线性与角度尺寸公差
Tolerances for linear and angular dimensions without individual tolerance indications
GB/T 1804-m eqv ISO 2768-1:m
未注形位与位置尺寸公差
Geometrical tolerance for features without individual tolerance indications
GB/T 1184-K eqv ISO 2768-2:K

批准 Approve	7mm	3.10
标准化 Standard	2023.2	1.9
工艺 Technology	2023.2	1103.09
审核 Check	2023.2	3.9
设计 Design	周俊	2011.03.09

MOONS' Hybrid Stepping Motor
Shanghai Moons' Electric Co., Ltd.

This document is released for information only. Its reproduction in whole or in part or its dissemination to third parties is prohibited. All trademarks and registered trademarks appearing on this document are the property of their respective owners.

Type: 34HD2801-15 Rev. A SCALE 1:1 Sheet 1 of 1

G		
F		
E		
D		
C		
B		
A	原始版本 Original revision	2011.03.09
REV.	版本记录 REVISION RECORD	DATE

UNLESS OTHERWISE SPECIFIED

NAMES SIGNATURE DATE