

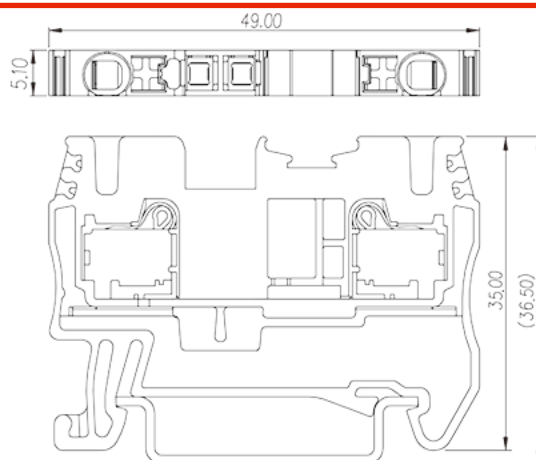
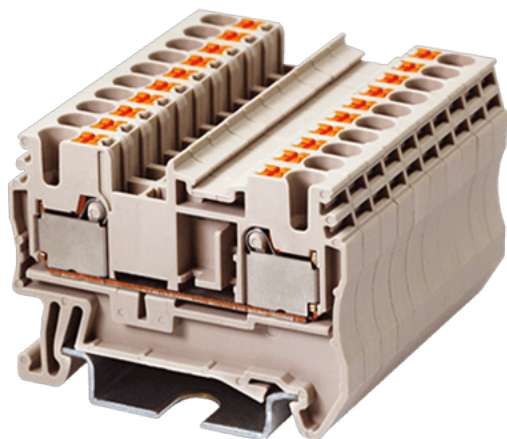
DP2.5

DIN

>

:2018-08-20

:1.1



600V, 20A , Grey(default)

	DIN Rail terminal blocks , Push-in design Terminal Block
	Push-in Design Terminal Block
	Grey(default)
	Push in Design
	Rail Mounting
(mm)	36.50
(mm)	5.10
(mm)	49.00
	Single level
	2
	PA66
	I
UL 94	V0
	500M at DC 500V
	Copper Alloy



		Tinned
-IEC		
(V)		800
(A)		24
(III/3)(V)		800
(III/3)(KV)		8
(mm ²)		0.14
(mm ²)		4
(mm ²)		0.14
(mm ²)		2.5
(mm ²)	' ,	0.2
(mm ²)	' ,	2.5
(mm ²)	' ,	0.2
(mm ²)	' ,	2.5
	² (mm ²) ' ,	0.5
	² (mm ²) ' ,	0.5
Width)(mm)	(Blade thickness x	0.6X3.5
		10
		TS-35
		YES
		NO
-UL		
(UL/CUL Group B)(V)		600
(UL/CUL Group B)(A)		20
(UL/CUL Group C)(V)		600
(UL/CUL Group C)(A)		20
UL/CUL	AWG	26
UL/CUL	AWG	12
UL/CUL	AWG	26

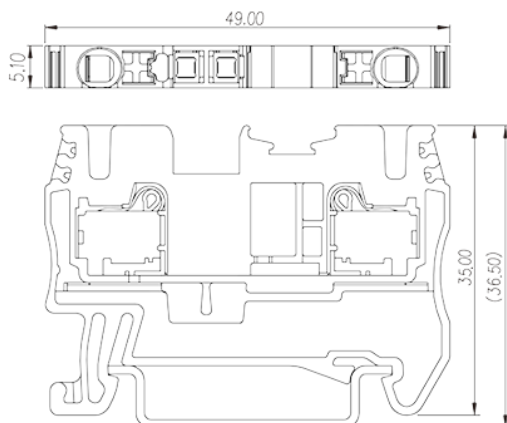
UL/CUL	AWG	12
&		
	(YES or NO)	YES
가	(YES or NO)	YES
		120
		-40

UL

(Group B)(AWG)	26~12
(Group B)(V)	600
(Group B)(A)	20
(Group C)(AWG)	26~12
(Group C)(V)	600
(Group C)(A)	20

CUL

(Group B)(AWG)	26~12
(Group B)(V)	600
(Group B)(A)	20
(Group C)(AWG)	26~12
(Group C)(V)	600
(Group C)(A)	20





因联结而喜悦!!
Delight Through Connections

