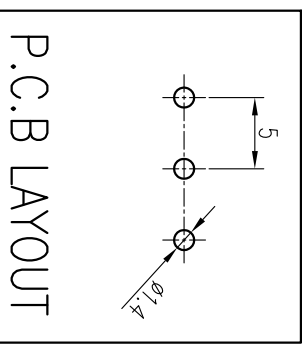
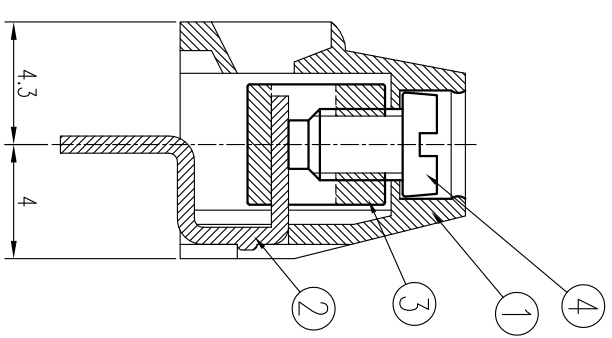
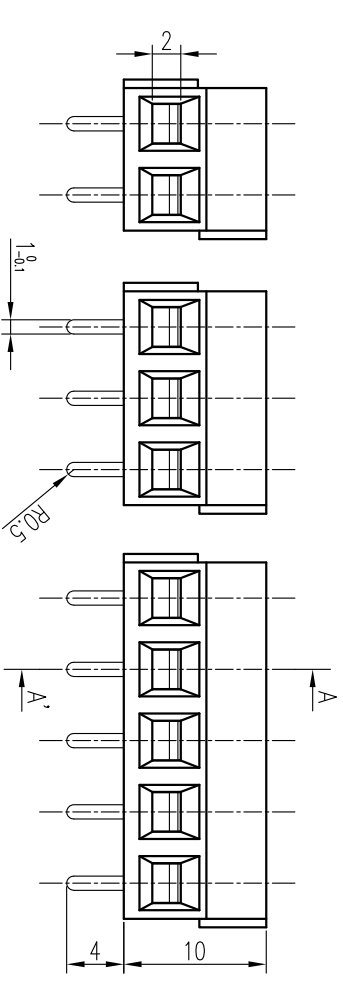
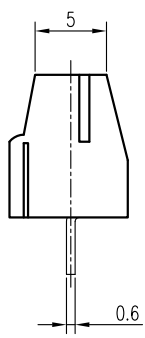
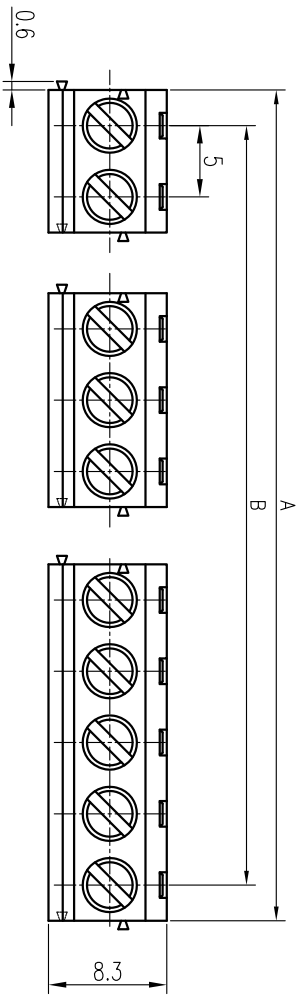


P	1	2	3	4	5	6	7	8	9	10	11	12	13	14	15	16	17	18	19	20	NP
A	-	10	15	20	25	30	35	40	45	50	55	60	65	70	75	80	85	90	95	100	NPx5
B	-	5	10	15	20	25	30	35	40	45	50	55	60	65	70	75	80	85	90	95	(NP-1)x5



SPECIFICATION

1. 정격 : 250V 6A
2. 절연 저항 : DC 500V 1000MΩ 이상
3. 내전압 : AC2000V / min
4. 와이이어사용범위 : AWG18~26
5. 사용온도범위 : -40°C~85°C
6. 조임 Torque 권고치 : 4.0kgf·cm 이내

조립규격참조		COMMERCIAL TOLERANCE	
P	*A* 조립공차	0.5 to 3	± 0.12
~ 5 P	25 ± 0.5	over 3 to 6	± 0.16
~ 10 P	50 ± 0.5	over 6 to 10	± 0.18
~ 15 P	75 ± 0.8	over 10 to 18	± 0.22
~ 20 P	100 ± 0.8	over 18 to 30	± 0.25
21 P 이상	현물 기준	over 30 to 50	± 0.3
		over 50 to 80	± 0.35
		over 80 to 120	± 0.45

*본 제품은 유해 물질 관리 기준치를 초과하지 않는 제품임 (RoHS Compliance)

DRAWN	CHECKED	CHECKED	CHECKED	APPROVED	THIRD ANGLE PROJECTION		
S.M JUNG					DATE.	UNIT	SCALE
16.07.08					2016.07.08	MM	2:1

TITLE		DWG No.
BR - 5001C		BRT - 014

No.	PART No.	PART NAME	MATERIAL	Q'TY	REMARKS	FINISH
④	BOLT	SCREW	SMCH10A	P	M2.5x4	NI
③	DM-5001C	REC-TERMINAL (A자)	FREE-CUTTING BRASS(제4형용)	P	C3604	NI
②	DM-5001C	TERMINAL	BRASS	P	C2680R 1/2H 0.6t	Sn
①	SMC-5001	FRAME	PA66	P	UI94V-0	GREEN

