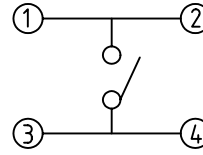
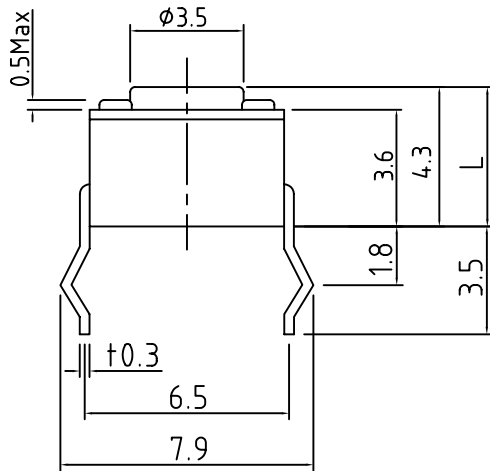


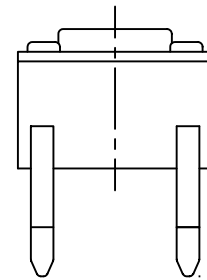
CIRCUIT DIAGRAM



MODEL No	L (mm)
1102	4.3
1102A	5.0
1102B	7.0
1102C	8.0
1102D	9.5
1102E	7.3
1102F	12.5
1102G	13.5
1102H	9.7
1102I	17.0
1102J	16.3

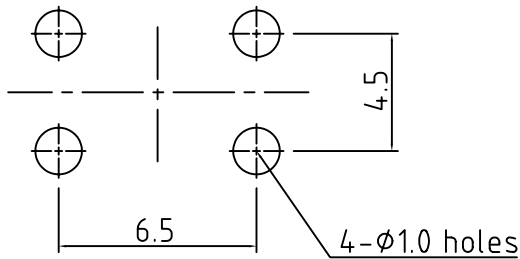


P.C.B LAND PATTERN



SPECIFICATION

1. RATING : 50mA, DC12V Max.
2. CIRCUIT : 1C-1P.
3. OPERATING FORCE : 160,250G±50G
4. CONTACT RESISTANCE : 100mΩ Max.
5. TRAVEL : 0.25±0.1mm
6. LIFE : 1,000,000 Cycles min
7. TOLERANCE : ±0.3



NO	DESCRIPTION	MATERIAL	SPECIFICATION			TREATMENT	REMARK
△			APPROVAL	CHECK	DESIGN	TITLE	TACT SWITCH
△						MODEL	CTT-1102
△						SPEC No	
MARK	DATE	REVISIONS	SIGN				