

접수번호 : 20-038828-01-1
(Receipt No.)



안전인증서

Safety Certificate

안전인증번호 : SU10695-20001A
(Certificate No.)

제조사/수입자명 : Shenzhen Keyuantai Industrial Co., Ltd.
(Manufacturer/importer)

주소 : Western Side of 1st Floor and 4th Floor, Building 1, Xinbaoji Industrial Park, Tiezai Road, Gongle Community, Xixiang Street, Baoan District, Shenzhen City, Guangdong Province, CHINA

제품명 : 직류전원장치
(Product) (AC/DC adapter)

기본모델명 : KYT240050BE
(Basic Model)

파생모델명 : See the attachment 2
(Series Model)

정격/안전기준상의 모델구분 : 100-240 V~, 50/60 Hz, 0.35 A (DC Output: 24.0 V, 0.5 A)
(Rating)

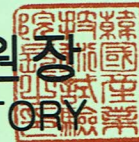
시험기준 : K60950-1(2011-12)
(Standard)

본 인증서는 제조국명 : 중국
제조사명 : Shenzhen Keyuantai Industrial Co., Ltd.
제조공장의 주소 : Western Side of 1st Floor and 4th Floor, Building 1, Xinbaoji Industrial Park, Tiezai Road, Gongle Community, Xixiang Street, Baoan District, Shenzhen City, Guangdong Province, CHINA
의 제품에만 해당함

「전기용품 및 생활용품 안전관리법 시행규칙」 제9조제2항, 제4항, 제10조제2항 또는 제15조제2항에 따라 안전인증서를 발급합니다.
We issue This Safety Certificate for the above appliances in accordance with the Article 9(2), 9(4), 10(2) or 15(2) of the Enforcement Rule of the Electrical Appliances and Consumer Products Safety Control Act.

2020년 07월 08일
Year month day

한국산업기술시험원
KOREA TESTING LABORATORY



* 이 인증서는 「전기용품 및 생활용품 안전관리법 시행규칙」에 따른 제품의 안전성 확인에 한정된 것이며, 그 밖의 다른 법률이 적용되는 제품의 경우에는 해당 법률에 따라 추가로 인증·허가 등을 받아야 합니다.

첨부서류	1. 전기용품의 안전관리부품 및 재질목록(List of Critical Components) 2. 기본모델·파생모델의 내용 (Descriptions of the basic and series model) 3. 안전인증의 변경 현황 (Revisions Status)
------	---

□ 첨부 1 : 전기용품의 안전관리부품 및 재질목록
List of Critical Components

부품명(회로기호) Component(Part no.)	제조사(상표명) Manufacturer(Brand)	모델명(형식) Model(Type)	정격 또는 특성 Rating or Characteristics	인증마크 Tested by
Enclosure/Plug holder	Sabic Innovative Plastics US LLC	EXL9112	115 °C, V-0, min. Thickness 1.5 mm	UL
(Alternate)	Covestro Deutschland Ag [Pc Resins]	6485+(z)(f1)	115 °C, V-0, min. Thickness 1.5 mm	UL
PCB	SHANDONG JINBAO TECH-INNOV CORPORATION	ZD-95GF	V-0, min. 130 °C.	UL
(Alternate)	Interchangeable	Interchangeable	V-0, min. 130 °C.	UL
Fuse (F1)	Dongguan Anlu Electronics Technology Co. Ltd.	AMT	T 1 A, 250 V	VDE
(Alternate)	Shenzhen Lanson Electronics Co., Ltd.	SMT	T 1 A, 250 V	VDE
(Alternate)	XC Electronics (Shenzhen) Corp. Ltd.	5TE	T 1 A, 250 V	VDE
Fusible Resistor (F1) (Alternate)	Anhui Changsheng Electronics Co., Ltd	RXF21-1W	4.7 Ω , 1 W	Tested with appliance
Y-Capacitor (CY1)	Shantou High-New Technology Development Zone Songtian Enterprise Co., Ltd	CD Series	Max. 1000 pF, min. 250 V, Y1	VDE
(Alternate)	Dongguan City Dafu Electronics Co. Ltd.	CT7Y1 Series	Max. 1000 pF, min. 250 V, Y1	VDE
(Alternate)	JYH HSU (JEC) ELECTRONICS LTD	JD	Max. 1000 pF, min. 250 V, Y1	VDE
(Alternate)	Guangdong South Hongming Electronic Science and Technology Co., Ltd.	F	Max. 1000 pF, min. 250 V, Y1	VDE
(Alternate)	Shenzhen Teruixiang Electronic Co, Ltd.	TY-Series	Max. 1000 pF, min. 400 V, Y1	VDE
Transformer (T1)	HUBEI XING YUAN ELECTRONIC TECHNOLOGY CO., LTD	EE16L01(5-24V)	Class B	Tested with appliance

부품명(회로기호) Component(Part no.)	제조사(상표명) Manufacturer(Brand)	모델명(형식) Model(Type)	정격 또는 특성 Rating or Characteristics	인증마크 Tested by
<p><input type="checkbox"/> 유의사항 (Attention) :</p> <p>1. 안전관리부품은 전기적인 안전에 직접적인 영향을 주는 부품으로서 안전인증기관이 정기공장검사 시 확인 관리 하는 사항입니다. 따라서 상기목록에 기재된 사항을 변경하거나 또는 복수등재를 원하시는 경우는 안전인증기관에 인증변경신청을 하여야 합니다.</p> <p><i>As the "Critical components" are parts in directly related with safety, these components shall be checked during a factory inspection by the certification body. In case of applying multiple listing or changing the items above, the certification revision shall be applied.</i></p> <p>2. 인증변경신청 없이 임의로 변경하는 경우는, 전기용품 및 생활용품 안전관리법 시행규칙 제 21 조제 1 항 또는 제 38 조제 1 항 규정에 의한 안전인증 취소 혹은 안전확인신고 효력상실 사유가 됨을 유의하시기 바랍니다.</p> <p><i>The Safety Certification will be cancelled under the Article 21(1), 38(1) of the Enforcement Rule of the Electrical appliances and Consumer Products Safety Control Act if the contents of the Certification is altered without our authorization.</i></p>				

FP511-04

□ 첨부 2 : 기본모델 · 파생모델의 내용
 Description of the basic and series model

파생모델명 Derivative model	기본모델과의 차이점 Differences between the basic and derivative model(s)
KYT050240BE-06	Same as basic model except for output type, output rating and model designation. Output type: Cable type (KYT240050BE) USB type (KYT050240BE-06) Output: 5 Vdc, 2.4 A
KYT050240BE-05	Same as basic model except for output rating and model designation. Output: 5 Vdc, 2.4 A
KYT050200BE-06	Same as basic model except for output type, output rating and model designation. Output type: Cable type (KYT240050BE) USB type (KYT050200BE-06) Output: 5 Vdc, 2.0 A
KYT050200BE-05	Same as basic model except for output rating and model designation. Output: 5 Vdc, 2.0 A
KYT050150BE-06	Same as basic model except for output type, output rating and model designation. Output type: Cable type (KYT240050BE) USB type (KYT050150BE-06) Output: 5 Vdc, 1.5 A
KYT050150BE-05	Same as basic model except for output rating and model designation. Output: 5 Vdc, 1.5 A
KYT050120BE-06	Same as basic model except for output type, output rating and model designation. Output type: Cable type (KYT240050BE) USB type (KYT050120BE-06) Output: 5 Vdc, 1.2 A
KYT050120BE-05	Same as basic model except for output rating and model designation. Output: 5 Vdc, 1.2 A
KYT050100BE-06	Same as basic model except for output type, output rating and model designation. Output type: Cable type (KYT240050BE) USB type (KYT050100BE-06) Output: 5 Vdc, 1.0 A
KYT050100BE-05	Same as basic model except for output rating and model designation. Output: 5 Vdc, 1.0 A
KYT060200BE	Same as basic model except for output rating and model designation. Output: 6 Vdc, 2.0 A
KYT060150BE	Same as basic model except for output rating and model designation. Output: 6 Vdc, 1.5 A
KYT060120BE	Same as basic model except for output rating and model designation. Output: 6 Vdc, 1.2 A
KYT060100BE	Same as basic model except for output rating and model designation. Output: 6 Vdc, 1.0 A
KYT084120BE	Same as basic model except for output rating and model designation. Output: 8.4 Vdc, 1.2 A
KYT084100BE	Same as basic model except for output rating and model designation. Output: 8.4 Vdc, 1.0 A
KYT090120BE	Same as basic model except for output rating and model designation. Output: 9 Vdc, 1.2 A
KYT090100BE	Same as basic model except for output rating and model designation. Output: 9 Vdc, 1.0 A

파생모델명 Derivative model	기본모델과의 차이점 Differences between the basic and derivative model(s)
KYT090060BE	Same as basic model except for output rating and model designation. Output: 9 Vdc, 0.6 A
KYT100100BE	Same as basic model except for output rating and model designation. Output: 10 Vdc, 1.0 A
KYT120100BE	Same as basic model except for output rating and model designation. Output: 12 Vdc, 1.0 A
KYT120050BE	Same as basic model except for output rating and model designation. Output: 12 Vdc, 0.5 A
KYT126095BE	Same as basic model except for output rating and model designation. Output: 12.6 Vdc, 0.95 A
KYT150080BE	Same as basic model except for output rating and model designation. Output: 15 Vdc, 0.8 A
KYT160075BE	Same as basic model except for output rating and model designation. Output: 16 Vdc, 0.75 A
KYT180065BE	Same as basic model except for output rating and model designation. Output: 18 Vdc, 0.65 A
KYT200060BE	Same as basic model except for output rating and model designation. Output: 20 Vdc, 0.6 A
제품특기사항 및 시험조건 Remarks & Test conditions	
<p>1. Review Report No. : 20-016988-02-2 (2020. 04. 22)</p> <p>2. Product Description</p> <ul style="list-style-type: none"> - Class of equipment: Class II - Protection against ingress of water: IPX0 - Mass of equipment (kg): < 1 - Rating: 100-240 V~, 50/60 Hz, 0.35 A (DC Output: 24.0 V, 0.5 A) 	
<p>□ 본 제품의 검토내용에 관하여 문의하실 사항이 있으시면 아래 연락처로 문의하시기 바랍니다. 검토담당자 : BK 전략본부 인증관리센터 박 일 우 / 02-860-1436</p> <p>□ If you have any question on product review, please contact the person below : Job holder : BK Strategy Division, Certification Management Center, Il-Woo Park / +82 2 860-1436</p>	

FP511-05

첨부 3 : 안전인증의 변경 현황
Revisions Status

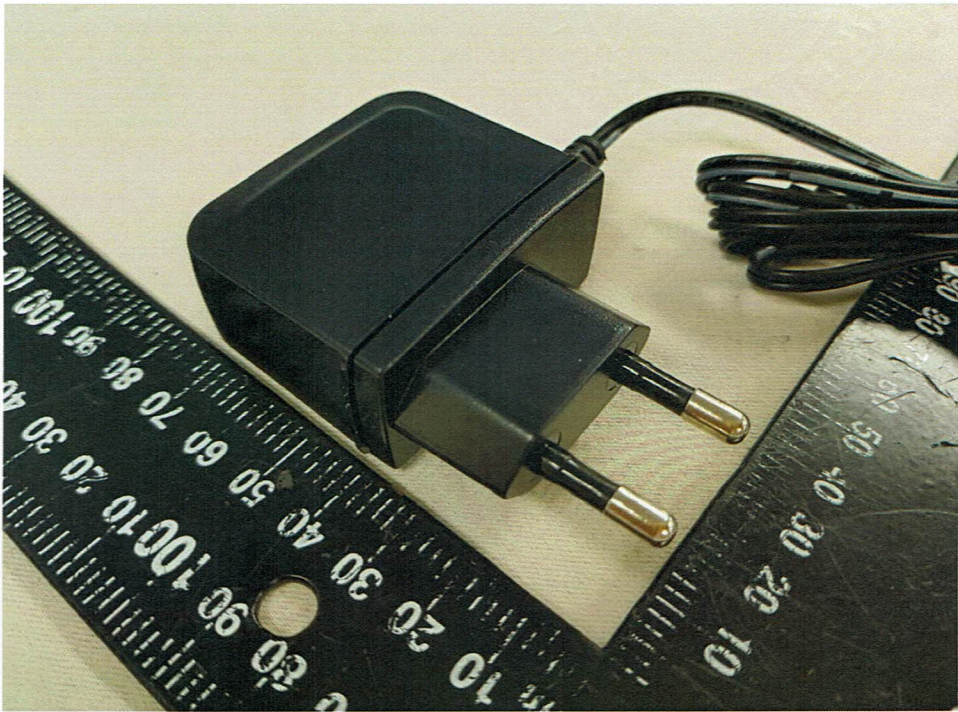
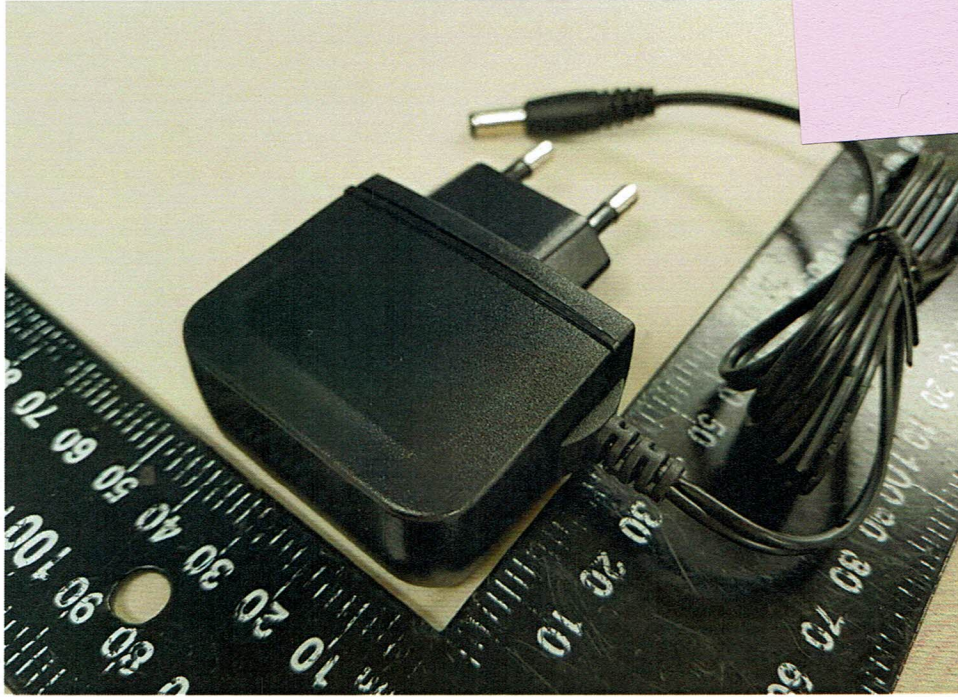
변경발급 내용 Contents of Certificate Revisions
<p>1st Rev.) Change of manufacturer address (20-038828-01-1 : 2020.07.08.)</p> <ul style="list-style-type: none">- Before : 2/3 Floor, Building C, Hongfa Industrial Park, Gushu Community, Xixiang Street, Bao'an District, Shenzhen, Guangdong, ChinaAfter : Western Side of 1st Floor and 4th Floor, Building 1, Xinbaoji Industrial Park, Tiezai Road, Gongle Community, Xixiang Street, Baoan District, Shenzhen City, Guangdong Province, CHINA

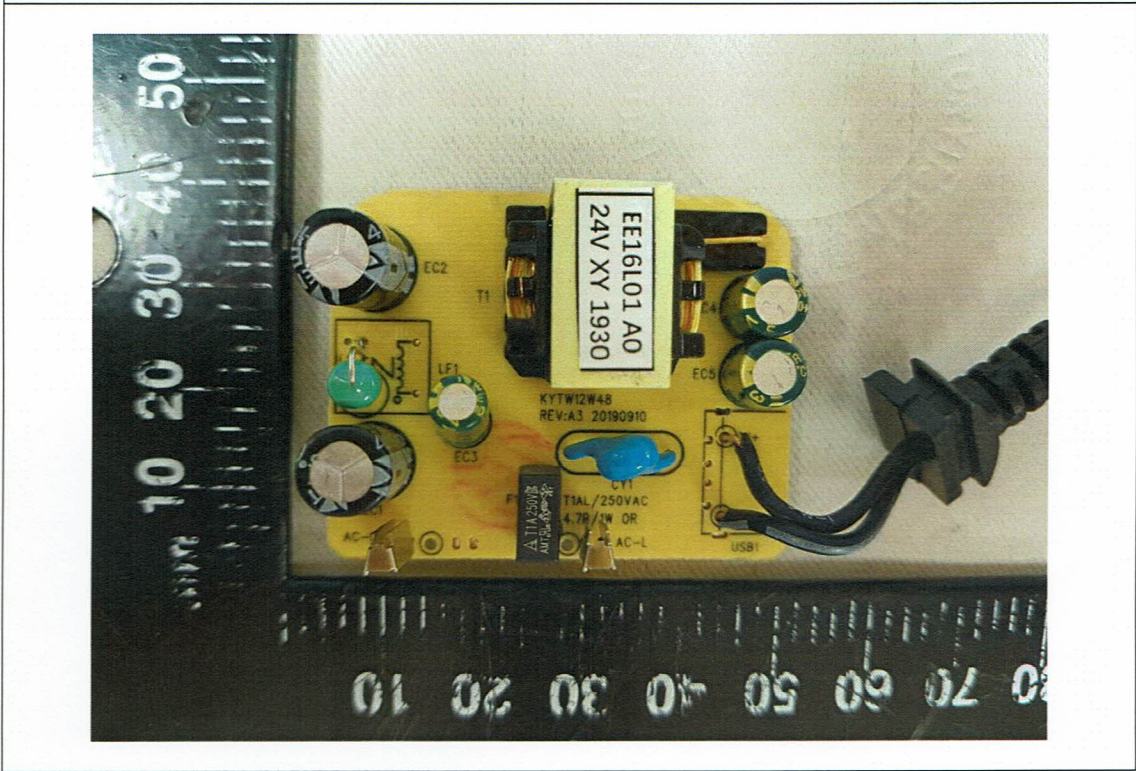
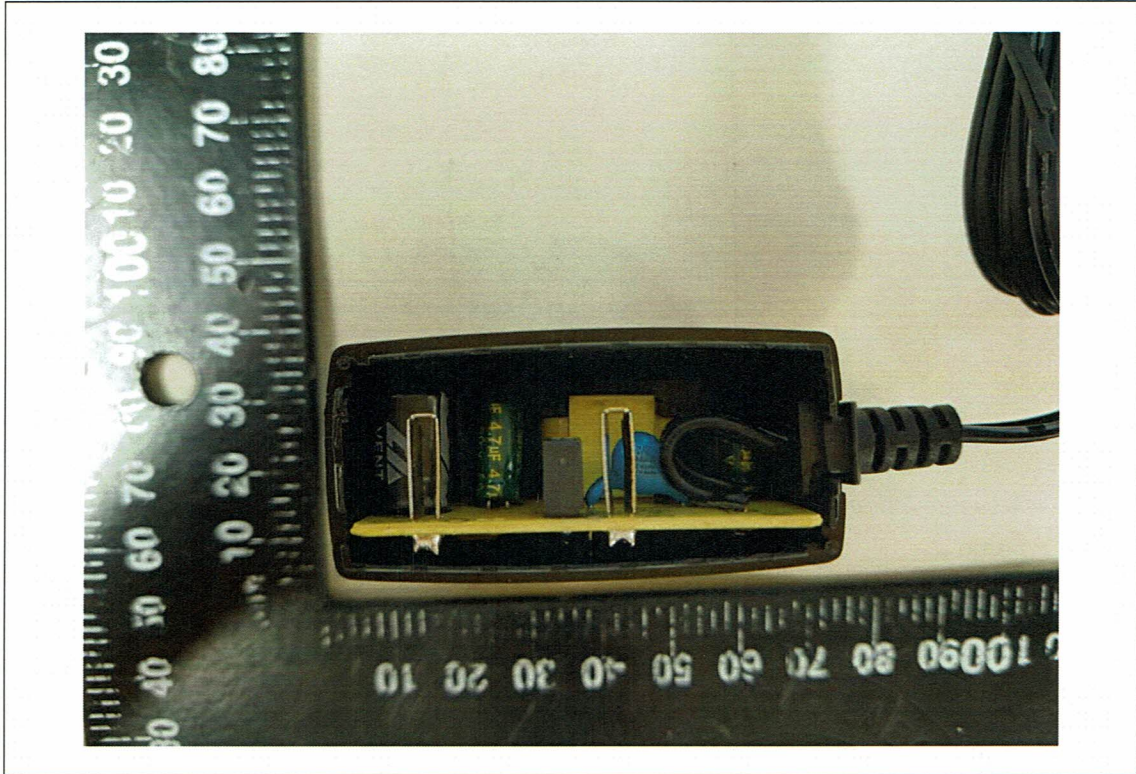
FP511-06

첨부 : 제품사진
Photographs

20-038828-02
01

<Output cable type>





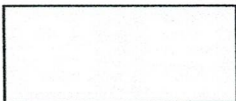
변경신고 처리결과 통보서

전자민원신청번호	202017210000117380	접수일자	2020-04-27	
대상 기기	상호 또는 성명	Shenzhen Keyuantai Industrial Co.,Ltd.	적합성평가 분야	적합등록
	기자재 명칭	직류전원장치	기본모델명	KYT240050BE
	적합성평가 번호	R-R-Kyt-KYT240050BE	적합성평가 연 월 일	2020-04-27
모델명	KYT050240BE-06,KYT050200BE-05,KYT050120BE-05,KYT050240BE-05,KYT050150BE-05,KYT050100BE-05,KYT060100BE,KYT090100BE,KYT100100BE,KYT120050BE,KYT150080BE,KYT180065BE,KYT050200BE-06,KYT050120BE-06,KYT060200BE,KYT060150BE,KYT084100BE,KYT050150BE-06,KYT050100BE-06,KYT060120BE,KYT084120BE,KYT090120BE,KYT120100BE,KYT160075BE,KYT090060BE,KYT126050BE,KYT200060BE			

「방송통신기자재등의 적합성평가에 관한 고시」 제16조에 따른 적합성평가 사항의 변경신고 건에 대하여 위와 같이 변경처리 되었음을 알려드립니다.

2020년(Year) 04월(Month) 27일(Date)

국립전파연구원장



방송통신기자재등의 적합등록 필증

Registration of Broadcasting and Communication Equipments

상호 또는 성명 <i>Trade Name or Registrant</i>	Shenzhen Keyuantai Industrial Co.,Ltd.
기자재명칭(제품명칭) <i>Equipment Name</i>	직류전원장치
기본모델명 <i>Basic Model Number</i>	KYT240050BE
파생모델명 <i>Series Model Number</i>	KYT050240BE-06, KYT126095BE, KYT200060BE, KYT160075BE, KYT126050BE, KYT120100BE, KYT090060BE, KYT090120BE, KYT084120BE, KYT060120BE, KYT060200BE, KYT050100BE-06, KYT050120BE-06, KYT050150BE-06, KYT050200BE-06, KYT180065BE, KYT150080BE, KYT120050BE, KYT100100BE, KYT090100BE, KYT084100BE, KYT060100BE, KYT060150BE, KYT050100BE-05, KYT050120BE-05, KYT050150BE-05, KYT050200BE-05, KYT050240BE-05
등록번호 <i>Registration No.</i>	R-R-Kyt-KYT240050BE
제조사/제조(조립)국가 <i>Manufacturer/Country of Origin</i>	Shenzhen Keyuantai Industrial Co.,Ltd. / 중국
등록연월일 <i>Date of Registration</i>	2020-03-31
기타 <i>Others</i>	

위 기자재는 「전파법」 제58조의2 제3항에 따라 등록되었음을 증명합니다.
It is verified that foregoing equipment has been registered under the Clause 3, Article 58-2 of Radio Waves Act.

2020년(Year) 04월(Month) 27일(Day)

국립전파연구원장



Director General of National Radio Research Agency

※ 적합등록 방송통신기자재는 반드시 "적합성평가표시" 를 부착하여 유통하여야 합니다.
위반시 과태료 처분 및 등록이 취소될 수 있습니다.