



### FEATURES 5V, 12V, 24V, 48V Inputs / Single, Dual Outputs

- High Efficiency
- Encapsulated Small / Compact Size
- Wide 2:1 Input Range
- 300kHz Fixed Frequency
- Input / Output Isolation
- Surface Mounting Technology
- Current Mode Control
- Output Low Ripple / Noise
- Low Start up Current
- Remote On/Off Control (CNT)
- Output Voltage Adjustment (TRM)
- Over Voltage Protection (OVP)
- 3 Year Warranty

### ELECTRICAL SPECIFICATIONS

<b>Input</b>	<ul style="list-style-type: none"> <li>· Input Range ..... DC 5V(4.5 - 7.2), 12V(8 - 16.5), 24V(18 - 32), 48V(32 - 63)</li> <li>· Efficiency ..... 76 - 88% Typ.</li> <li>· Remote On/Off Control ..... TTL Compatible                             <ul style="list-style-type: none"> <li>On : 0 to 1.2 Vdc or Short to -Vin</li> <li>Off : 2.4 to 5.5 Vdc or Open</li> </ul> </li> </ul>
<b>Output</b>	<ul style="list-style-type: none"> <li>· Output Voltages ..... 3.3V, 5V, 12V, 15V, ±5V, ±12V, ±15V</li> <li>· Output Voltage Tolerance ..... ±2.0% (Single and Uncomplementary Dual), ±3.0% (Complementary Dual)</li> <li>· Line Regulation ..... ±0.5% Max.</li> <li>· Load Regulation ..... ±1.0% Max. (Single), ±2.5% Max. (Dual : Minimum Load 10%)</li> <li>· Ripple and Noise ..... 1% of Vout (Bandwidth : 20MHz)</li> </ul>
<b>Protection Circuit</b>	<ul style="list-style-type: none"> <li>· Over Current Protection ..... Work Over 105% of Rating (Current Limited Output) (<b>NOTE 1</b>)</li> <li>· Over Voltage Protection ..... Work at 115 - 140% of Rating</li> </ul>
<b>Electrically Isolated</b>	<ul style="list-style-type: none"> <li>· Isolation ..... Input-Output, Input-Case, Output-Case / DC500V, 100MΩ</li> <li>· High Pot ..... Input-Output, Input-Case, Output-Case / AC500V, 1Min.</li> </ul>

### ENVIRONMENTAL

· Operating Temperature Range	..... -20°C ~ 71°C
· Option, See <b>NOTE 2</b>	..... -40°C ~ 85°C
· Operating Humidity (Non-Condensing)	..... 20% ~ 90%RH
· Storage Temperature Range	..... -40°C ~ 105°C
· Storage Humidity (Non-Condensing)	..... 10% ~ 95%RH
· Cooling Method	..... Convection
· MTBF (MIL-HDBK-217F)	..... 5.2 x 10 <sup>5</sup> hrs
· Safety (Single Output)	..... CE_LVD (EN 60950) through TÜV

**NOTE** 1. Long term continuous operation into a short circuit will compromise the reliability of the unit.  
 2. As a factory added option, the all model can be operated from -40°C to 85°C, the suffix 'M' should be added to the model number when ordering. ex) PS15-24-5M

ORDERING INFORMATION

Input	Output1	Output2	Maximum Power	Ripple & Noise Max.	Efficiency Typ.	Model Number
4.5 - 7.2V	3.3V@2.00A		6.60W	75mVp-p	76%	PS15-5-3R3
4.5 - 7.2V	5V@2.00A		10.00W	75mVp-p	78%	PS15-5-5
4.5 - 7.2V	12V@1.00A		12.00W	120mVp-p	80%	PS15-5-12
4.5 - 7.2V	15V@0.80A		12.00W	150mVp-p	80%	PS15-5-15
4.5 - 7.2V	+5V@1.00A	-5V@1.00A	10.00W	120/120mVp-p	80%	PD15-5-55
4.5 - 7.2V	+12V@0.50A	-12V@0.50A	12.00W	150/150mVp-p	80%	PD15-5-1212
4.5 - 7.2V	+15V@0.40A	-15V@0.40A	12.00W	150/150mVp-p	80%	PD15-5-1515
8 - 16.5V	3.3V@2.40A		7.92W	75mVp-p	83%	PS15-12-3R3
8 - 16.5V	5V@2.40A		12.00W	75mVp-p	85%	PS15-12-5
8 - 16.5V	12V@1.20A		14.40W	120mVp-p	88%	PS15-12-12
8 - 16.5V	15V@1.00A		15.00W	150mVp-p	88%	PS15-12-15
8 - 16.5V	+5V@1.50A	-5V@1.50A	15.00W	120/120mVp-p	85%	PD15-12-55
8 - 16.5V	+12V@0.60A	-12V@0.60A	14.40W	150/150mVp-p	85%	PD15-12-1212
8 - 16.5V	+15V@0.50A	-15V@0.50A	15.00W	150/150mVp-p	85%	PD15-12-1515
18 - 32V	3.3V@2.40A		7.92W	75mVp-p	84%	PS15-24-3R3
18 - 32V	5V@2.40A		12.00W	75mVp-p	85%	PS15-24-5
18 - 32V	12V@1.20A		14.40W	120mVp-p	88%	PS15-24-12
18 - 32V	15V@1.00A		15.00W	150mVp-p	87%	PS15-24-15
18 - 32V	+5V@1.50A	-5V@1.50A	15.00W	120/120mVp-p	86%	PD15-24-55
18 - 32V	+12V@0.60A	-12V@0.60A	14.40W	150/150mVp-p	86%	PD15-24-1212
18 - 32V	+15V@0.50A	-15V@0.50A	15.00W	150/150mVp-p	86%	PD15-24-1515
32 - 63V	3.3V@2.40A		7.92W	75mVp-p	78%	PS15-48-3R3
32 - 63V	5V@2.40A		12.00W	75mVp-p	80%	PS15-48-5
32 - 63V	12V@1.20A		14.40W	120mVp-p	83%	PS15-48-12
32 - 63V	15V@1.00A		15.00W	150mVp-p	83%	PS15-48-15
32 - 63V	+5V@1.50A	-5V@1.50A	15.00W	120/120mVp-p	83%	PD15-48-55
32 - 63V	+12V@0.60A	-12V@0.60A	14.40W	150/150mVp-p	83%	PD15-48-1212
32 - 63V	+15V@0.50A	-15V@0.50A	15.00W	150/150mVp-p	83%	PD15-48-1515

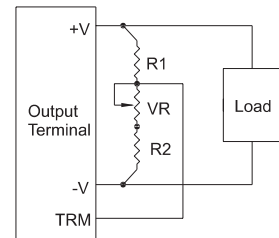
PIN ASSIGNMENTS

Single Output	Dual Output
1. +Vin	1. +Vin
2. - Vin	2. - Vin
3. CNT	3. CNT
4. +Vout	4. Output1
5. No Pin	5. COM
6. - Vout	6. Output2
7. TRM	7. TRM

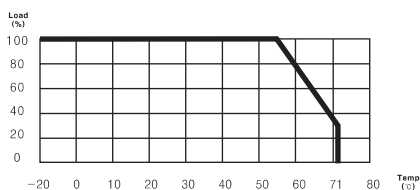
EXTERNAL PARTS

Model	Output Voltage	VR	R1	R2
PS 15	5V	1kΩ	1kΩ	680Ω
	12V	1kΩ	3.9kΩ	680Ω
	15V	1kΩ	5.6kΩ	750Ω
PD 15	±5V (10V)	1kΩ	3.3kΩ	680Ω
	±12V (24V)	5kΩ	9.0kΩ	820Ω
	±15V (30V)	5kΩ	20.0kΩ	910Ω

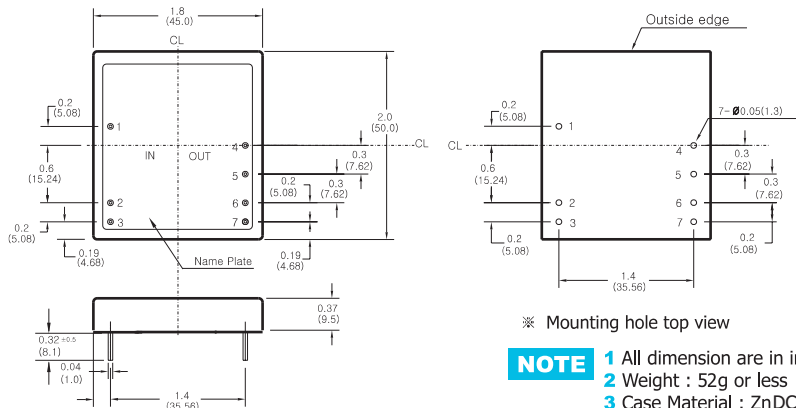
TRIM METHOD



DERATING CURVE



DIMENSIONS



**NOTE** 1 All dimension are in inches (mm)  
 2 Weight : 52g or less  
 3 Case Material : ZnDC