



FEATURES 24V, 48V Inputs / Single Outputs

- High Efficiency (Synchronous Rectification)
- Encapsulated Small / Compact Size
- Wide 2:1 Input Range
- 300kHz Fixed Frequency
- Input / Output Isolation
- Surface Mount Technology
- Output Low Ripple / Noise
- Current Mode Control
- Long Life Design (Employ Only Ceramic Capacitor)
- Under Voltage Lock Out, Thermal Shut Down, Short Circuit Protection
- Remote On/Off Control (CNT)
- Output Voltage Adjustment (TRM)
- Over Voltage Protection (OVP)
- Low Output Ripple / Noise
- 3 Year Warranty

ELECTRICAL SPECIFICATIONS

Input	· Input Range	DC 24V(18 - 36), 48V(36 - 75)
	· Efficiency	86 - 93% Typ.
	· Remote On / Off	TTL Compatible
		<ul style="list-style-type: none"> On : Open Off : Short to -Vin

Output	· Output Voltages	2.5V, 3.3V, 5V, 12V, 15V
	· Output Voltage Tolerance	±2.0%
	· Line Regulation	±0.5% Max.
	· Load Regulation	±1.0% Max.
	· Ripple and Noise	1% of Vout (Bandwidth : 20MHz)

Protection Circuit	· Over Current Protection	Work Over 105% of Rating (Hiccup mode) (NOTE 1)
	· Over Voltage Protection	Work at 115 - 140% of Rating

Electrically Isolated	· Isolation	Input-Output, Input-Case, Output-Case / DC500V, 100MΩ
	· High Pot	Input-Output, Input-Case, Output-Case / AC500V, 1Min.

ENVIRONMENTAL

· Operating Temperature Range	-40℃ ~ 85℃
· Operating Humidity (Non-Condensing)	20% ~ 90%RH
· Storage Temperature Range	-40℃ ~ 105℃
· Storage Humidity (Non-Condensing)	10% ~ 95%RH
· Cooling Method	Forced Air
· MTBF (MIL-HDBK-217F)	5.4 x 10 ⁵ hrs
· Safety	<ul style="list-style-type: none"> UL (UL 60950-1) CE_LVD (EN 60950-1) through TÜV

NOTE 1. Long term continuous operation into a short circuit will compromise the reliability of the unit.

ORDERING INFORMATION

Input	Output	Maximum Power	Ripple&Noise Max.	Efficiency Typ.	Model Number
18 - 36V	2.5V@15.00A	37.50W	70mVp-p	86%	PBR50-24-2R5
18 - 36V	3.3V@15.00A	49.50W	70mVp-p	88%	PBR50-24-3R3
18 - 36V	5V@10.00A	50.00W	70mVp-p	91%	PBR50-24-5
18 - 36V	12V@4.10A	49.20W	120mVp-p	93%	PBR50-24-12
18 - 36V	15V@3.30A	49.50W	150mVp-p	92%	PBR50-24-15
36 - 75V	2.5V@15.00A	37.50W	70mVp-p	87%	PBR50-48-2R5
36 - 75V	3.3V@15.00A	49.50W	70mVp-p	88%	PBR50-48-3R3
36 - 75V	5V@10.00A	50.00W	70mVp-p	90%	PBR50-48-5
36 - 75V	12V@4.10A	49.20W	120mVp-p	92%	PBR50-48-12
36 - 75V	15V@3.30A	49.50W	150mVp-p	91%	PBR50-48-15

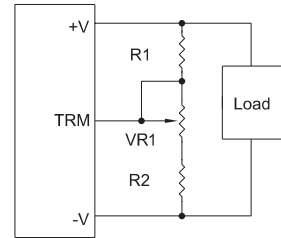
PIN ASSIGNMENTS

Single Output
1. CNT
2. - Vin
3. +Vin
4. No Conect
5. +Vout
6. - Vout
7. TRM

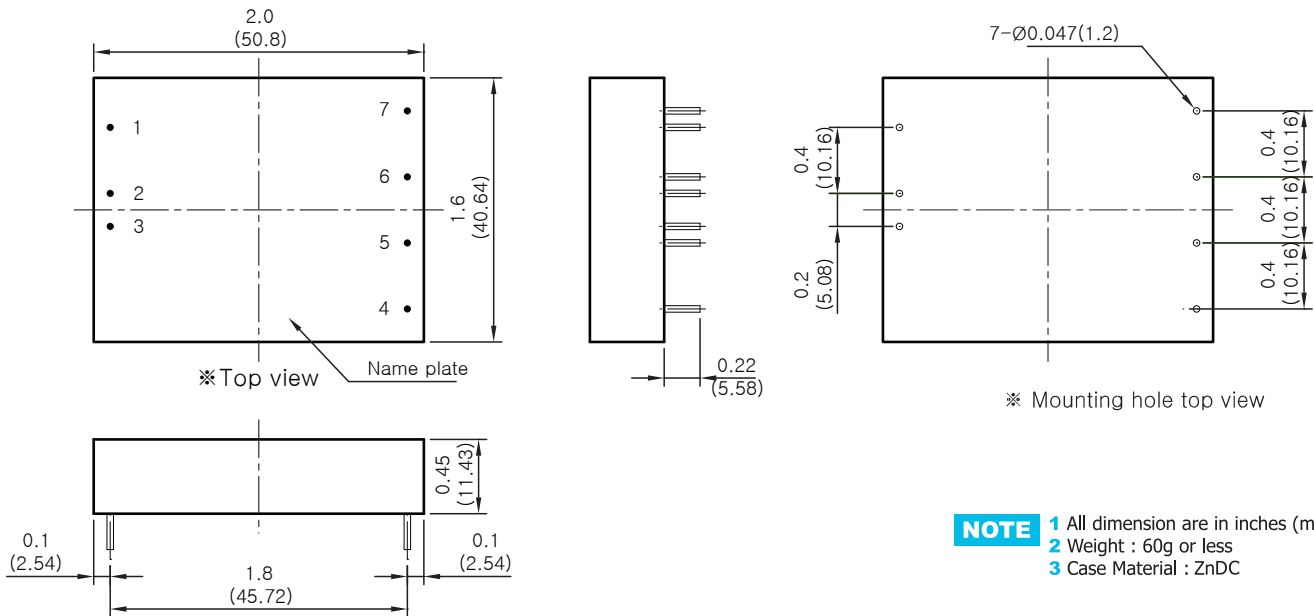
EXTERNAL PARTS

Model	Output Voltage	VR	R1	R2
PBR 50	2.5V	500Ω	750Ω	560Ω
	3.3V	500Ω	1kΩ	560Ω
	5V	1kΩ	1kΩ	680Ω
	12V	1kΩ	3.9kΩ	680Ω
	15V	1kΩ	5.6kΩ	750Ω

TRIM METHOD



DIMENSIONS



NOTE 1 All dimension are in inches (mm)
 2 Weight : 60g or less
 3 Case Material : ZnDC