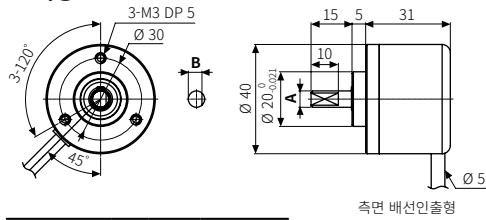




## 외형치수도

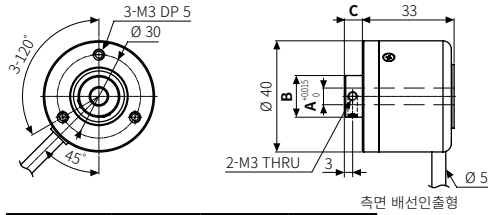
- 단위: mm, 오토닉스 웹사이트에서 제공하는 도면을 참조하십시오.
- 배선인출형 기준입니다.  
정격/성능의 배선, 소선, 커넥터 사양을 확인하십시오.

### ■ 축형



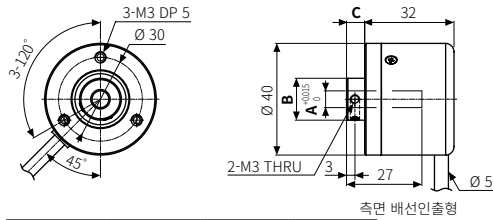
	A	B
E40S6	Ø 6 <sup>-0.004</sup> / <sub>-0.016</sub>	5
E40S8	Ø 8 <sup>-0.005</sup> / <sub>-0.02</sub>	7

### ■ 중공축형



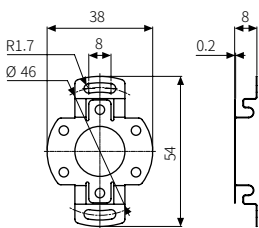
	A	B	C
E40H6	Ø 6	Ø 15	6.5
E40H8	Ø 8	Ø 15	6.5
E40H10	Ø 10	Ø 17	6.3
E40H12	Ø 12	Ø 17	6.3

### ■ 중공축 Built-in형

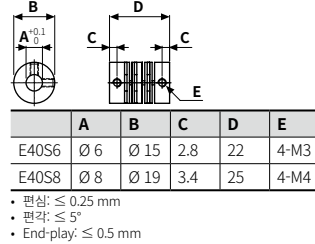


	A	B	C
E40HB6	Ø 6	Ø 15	6.5
E40HB8	Ø 8	Ø 15	6.5
E40HB10	Ø 10	Ø 17	6.3
E40HB12	Ø 12	Ø 17	6.3

### ■ 브라켓



### ■ 커플링



## 별매품

- 커넥터 케이블: CID6S-□, CID9S-□