

GEC-1405S

FEATURE:

CASE: MPP0, Black

PIN: Tin plated copper

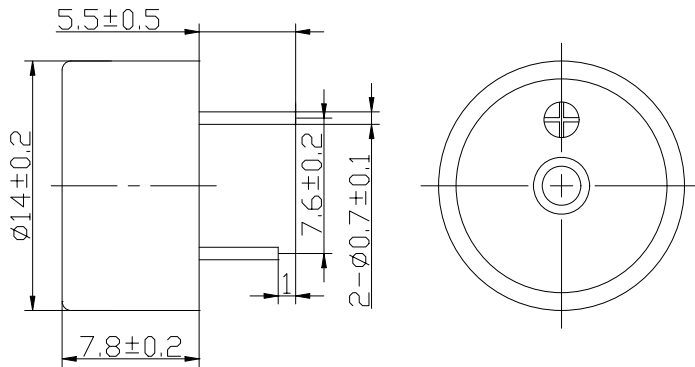
SPECIFICATIONS:

TYPE		XCPS14A4005PX
Rated Voltage	(VDC)	5
Operating Voltage	(VDC)	3-9
◆ Max. Current Consumption	(mA)	8/5VDC
◆ Min. Sound Output at 10cm	(dB)	80/5VDC/10cm
Resonant Frequency	(KHz)	4.0 ± 0.5
Operating Temperature	(°C)	-20 ~ +70
Storage Temperature	(°C)	-30 ~ +80
Weight	(g)	1

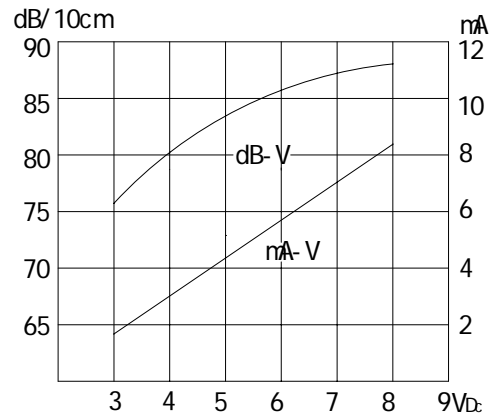
◆ Value applying rated voltage

DIMENSIONS

(UNIT: mm)



CHARACTERISTIC



SPECIFICATIONS

CUSTOMER:

PRODUCT: PIEZO BUZZER

MODEL NUMBER: GEC-1405S

CHANGZHOU XICHUN
ELECTRONICS CO., LTD.



1. SPECIFICATIONS

ITEMS	SPECIFICATIONS	CONDITIONS
RATED VOLTAGE	5V _{DC}	
OPERATING VOLTAGE	3-9V _{DC}	
RATED CURRENT	LESS THAN 8mA	APPLYING 5VDC RATED VOLTAGE
-tone NATURE	CONTINUOUS	
SOUND OUTPUT	MORE THAN 80dB	DISTANCE AT 10 CM FROM A MICROPHONE WITH APPLYING 5VDC RATED VOLTAGE
FREQUENCY	4000 ± 500Hz	MEASURING AT THE RATED DC VOLTAGE
WIRE STRENGTH	MORE THAN 1kg	
OPERATING TEMPERATURE	-20 ~ +70°C	
STORAGE TEMPERATURE	-30 ~ +80°C	
DIMENSIONS	SEE FIG. 1 ATTACHED	
APPEARANCE		THERE SHOULD BE NO REMARKABLE STAINS, RUSTS OR FLAWS.

NOTE:

TEST SHOULD BE MADE UNDER THE CONDITIONS OF ROOM TEMPERATURE (20 ± 10°C), RELATIVE HUMIDITY (60 ± 20%) AND NORMAL ATMOSPHERIC PRESSURE. IN THE CASE OF DOUBTFUL JUDGMENT , THE TESTING CONDITIONS ARE TO BE CHANGED TO ROOM TEMPERATURE 20 ± 2 °C , RELATIVE HUMIDITY 60-70% AND NORMAL ATMOSPHERIC PRESSURE.

2. INSPECTION STANDARD

ITEM TESTED	SYM	STANDARD	AQL	LEVEL	INSPECTION BY MEANS OF	REMARKS
NO SOUNDING		3-9V _{DC}	0.25	II	EARS	AT EACH 3, 5 AND 9 V _{DC} THERE SHOULD BE NO NON-SOUNDING, HARSH SOUND
SOUND OUTPUT		MORE THAN 80dB WHEN APPLYING RATED VOLTAGE	1	II	SOUND PRESSURE LEVEL METER	DISTANCE AT 10CM WITH MOUNTING TO INSPECTION DEVICE IN A STANDARD MANNER(A RANGE)
CURRENT		LESS THAN 8mA WHEN APPLYING RATED VOLTAGE	0.65	I	MULTIMETER	
BASIC FREQUENCY		4000±500Hz	0.65	I	FREQUENCY METER	
OUTER DIAMETER	A	Φ 14±0.2	1.5	S-3	ELECTRONICS CALIPERS	TO BE MEASURED AT THE MAXIMUM DIAMETER.
OVERALL THICKNESS	B	7.8±0.2				
PIN'S PITCH	C	7.6±0.2				
PIN'S LENGTH	D	5.5±0.5				
PIN'S DIAMETER	E	Φ0.7±0.1				
STATIONARY STRENGTH OF BASE		MORE THAN 1KG	1	II	TENSION GAUGE	BY PULLING THE BASE
STATE OF SOLDER			1	II	MAGNIFYING GLASSES	SOLDERED POINTS AND /OR COIL DISPOSITION SHOULD BE PROPER. (CROSSED COIL WIRE ARE NOT ACCEPTED)
RUST			1.5	II	EYES	ANY RUST SHOULD NOT BE ACCEPTED.
STAIN			1.5	II	EYES	THERE SHOULD BE NO RE-MARKABLE STAINS.
ADHESION			1.5	II	EYES	ADHESION SHOULD BE MADE SUFFICIENTAL AND THERE SHOULD BE NO OUTFLOW OF ADHESIVE AGENT.
OTHER APPEARANCE					EYES	

3. RELIABILITY TEST

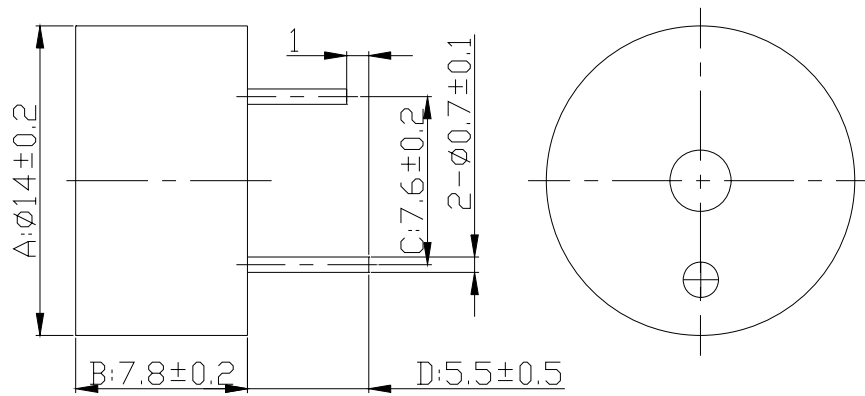
ITEM	METHOD OF TEST	STANDARD
OPERATING TEMP.	-20 ~ +70°C	ALL SPECIFICATIONS MUST BE SATISFIED AFTER THE TEST.
STORAGE IN HIGH TEMP.	STORAGE IN 80°C TEST BOX FOR 96 HOURS THEN EXPOSE TO THE ROOM TEMP. FOR 2 HOURS.	
STORAGE IN LOW TEMP.	STORAGE IN -30°C TEST BOX FOR 96 HOURS THEN EXPOSE TO THE ROOM TEMP. FOR 2 HOURS.	
LIFE TEST IN THE ROOM TEMP.	OPERATE THE BUZZER CONTINUOUSLY AT 5 SECONDS ON AND 5 SECONDS OFF FOR 500 HOURS AT RATED VOLTAGE.	
TEMP. CYCLE TEST	MAKE THE TEST FOR 5 CYCLES WITHOUT APPLYING POWER AS FIG.3, THEN EXPOSE TO THE ROOM TEMP. FOR 2 HOURS.	
TEMP./HUMIDITY CYCLE TEST	MAKE THE TEST FOR 10 CYCLES WITHOUT APPLYING POWER AS FIG.4, THEN EXPOSE TO THE ROOM TEMP. FOR 2 HOURS.	
VIBRATION TEST	MAKE THE TEST FOR THE DIRECTIONS OF X,Y,AND Z FOR 0.5 HOURS EACH (TOTAL 1.5 HOURS) TO-AND-FRO SWEEP TIME (FROM 10 TO 55 Hz AND THEN FROM 55Hz TO 10Hz) UNDER SINGLE AMPLITUDE OF 0.75 mm IS 1 MINUTE.	
DROP TEST	DROP A BUZZER NATURALLY FROM THE HEIGHT OF 700mm ONTO THE SURFACE OF 10mm THICK WOODEN BOARD. TWO DIRECTIONS: THE UPPER AND SIDE OF THE TRANSDUCER ARE TO BE APPLIED FOR THIS DROP TEST RESPECTIVELY ONCE.	

NOTE: THE PINS ARE ALLOWABLE TO DEFORM AFTER DROP TEST.

DIMENSIONS

(UNIT: mm)

PART NUMBER: PMB250A



NOTE:

PLEASE REFER TO A.B.C.D. IN THE SECOND VOLUME "SYM" IN PAGE 2

FIG. 1

TYPICAL CHARACTERISTIC CURVES OF PMB250A

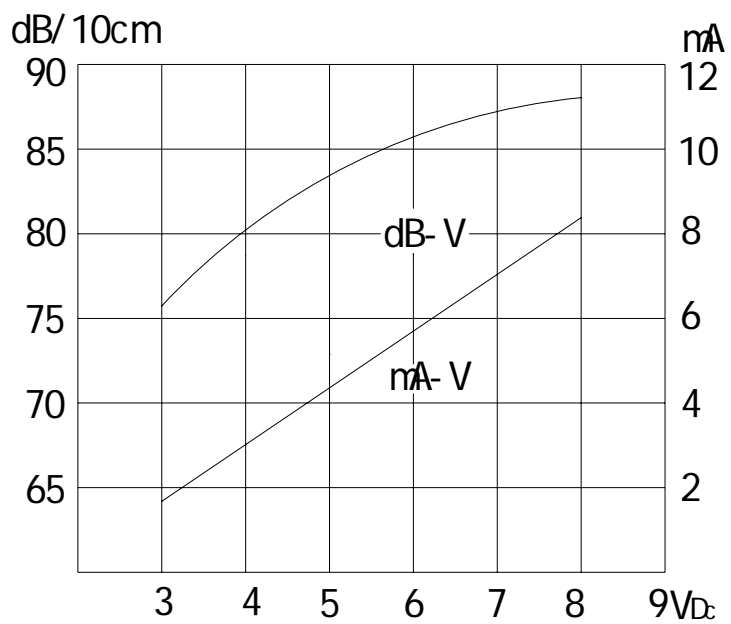
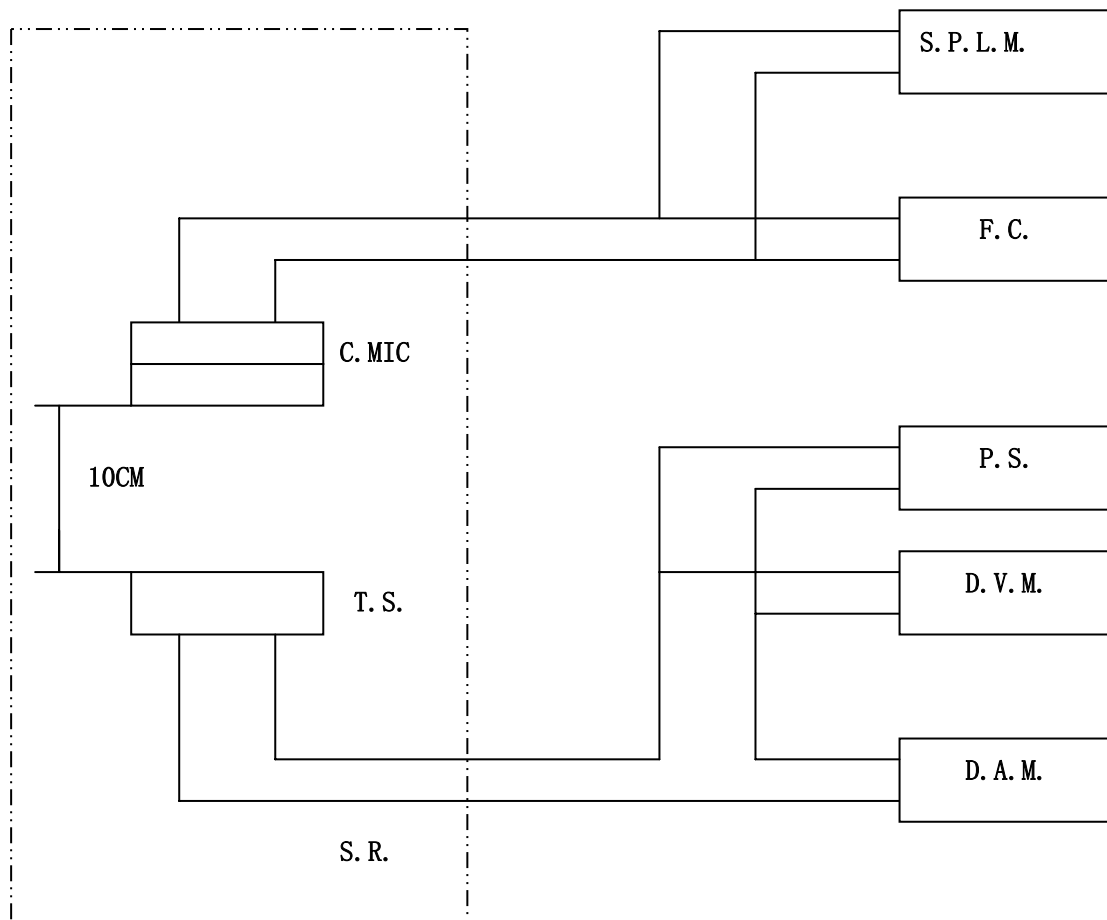


FIG.2

ELECTRICAL CHARACTERISTIC TEST METHOD



- S. P. L. M.: SOUND PRESSURE LEVEL METER
- F. C : FREQUENCY COUNTER
- D. A. M. : DC AMPERE METER
- S. R. : SOUNDPROOF ROOM
- D. V. M. : DC VOLT. METER
- T. S. : TESTING SAMPLE
- C. MIC : CONDENSER MIC
- P. S. : POWER SUPPLY

FIG. 5

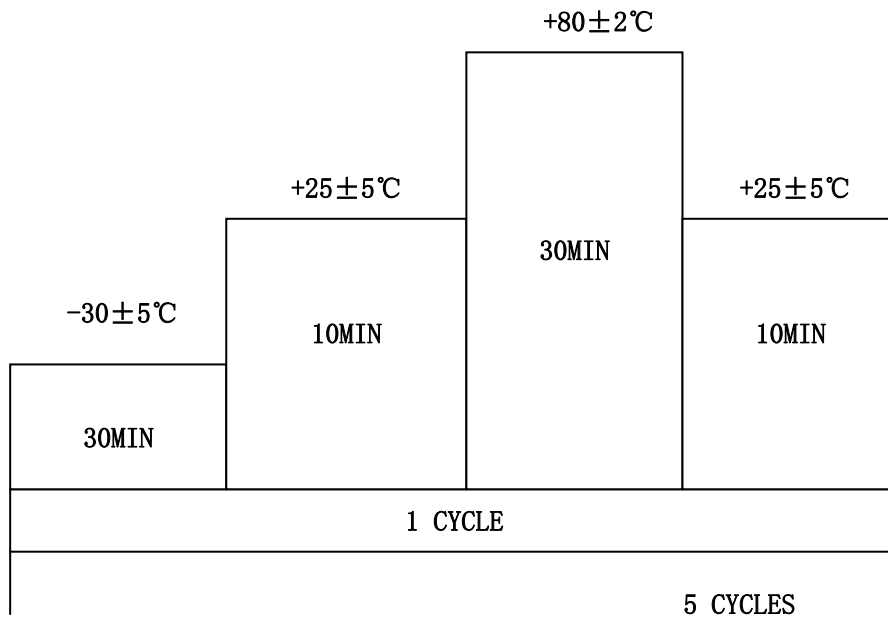


FIG. 3

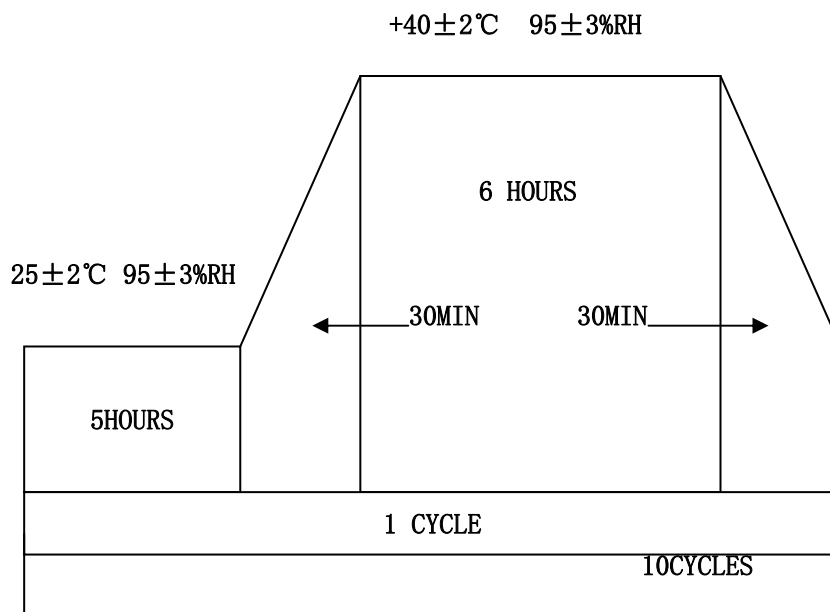


FIG. 4