

# Push Button Box

푸시버튼 박스  
按钮盒

HOLE : Ø22, Ø25, Ø30 (1 ~ 4 - HOLE)

FEATURE | 특성 | 特征

- Screw type, Knock out base
- This series has a pre-cut hole on the cover
- 스크류 타입, 베이스 녹아웃 있는 제품
- 커버홀이 있는 제품
- 螺栓型, 敲落孔盒
- 该系列盒盖有预先打好的孔

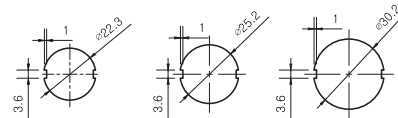
SPECIFICATION | 사양 | 产品规格说明

- Temperature Range / 온도영역 / 温度范围 | ABS : - 40 ~ + 70
- Flammability Rating / 난연성 / 阻燃等级 | ABS : 94-HB

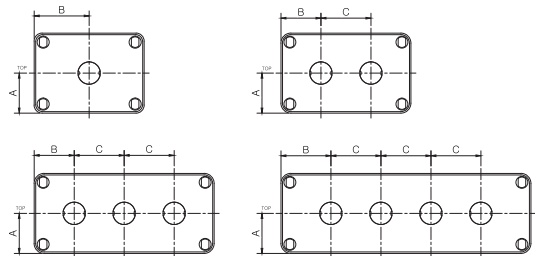


Model / 모델 / 型号	Hole	A	B	C
BC- A□S- 08110□- □□01	1-Hole	40	55	-
BC- A□S- 08130□- □□02	2-Hole	40	40	50
BC- A□S- 08180□- □□03	3-Hole	40	40	50
BC- A□S- 08250□- □□04	4-Hole	40	50	50

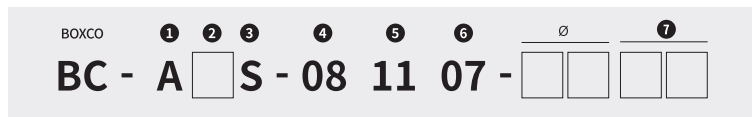
PUSH BUTTON HOLE



PUSH BUTTON HOLE SPACING



PUSH BUTTON BOX model name | 푸시버튼 박스 모델선정방법 | 按钮盒产品型号命名方法



- 1 Material / 재료 / 材质 - A : ABS
- 2 Cover / 커버색상 / 箱盖颜色 - Y : Yellow / 노란색 / 黄色 R : Red / 빨간색 / 红色
- 3 Type / 타입 / 类型 - Screw Cover / 스크류 커버 / 螺栓型
- 4 Width / 가로 / 宽度(W)
- 5 Length / 세로 / 长度(L)
- 6 Height / 높이 / 高度(H) - 高度(H) Cover Included / 커버포함 / 含箱盖
- 7 Hole / 홀 개수 / 孔数

Model 모델 / 型号	Ø	Hole	Product model / 제품모델 / 产品型号				Inside depth(mm) 내부깊이 / 内部深度
			Outside dimension 외부 치수 / 外部尺寸				
			Size (W1xL1xH1/mm)	Size (W1xL1xH1/inch)	Cover (H3)	Base (H4)	
BC- A□S- 081107- 2201	Ø22	1 HOLE	80 x 110 x 70	3.15 x 4.33 x 2.76	20	50	57
BC- A□S- 081108- 2201			80 x 110 x 85	3.15 x 4.33 x 3.35	35	50	72
BC- A□S- 081307- 2202		2 HOLE	80 x 130 x 70	3.15 x 5.12 x 2.76	20	50	57
BC- A□S- 081308- 2202			80 x 130 x 85	3.15 x 5.12 x 3.35	35	50	72
BC- A□S- 081807- 2203		3 HOLE	80 x 180 x 70	3.15 x 7.09 x 2.76	20	50	57
BC- A□S- 081808- 2203			80 x 180 x 85	3.15 x 7.09 x 3.35	35	50	72
BC- A□S- 082507- 2204		4 HOLE	80 x 250 x 70	3.15 x 9.84 x 2.76	20	50	57
BC- A□S- 082508- 2204			80 x 250 x 85	3.15 x 9.84 x 3.35	35	50	72
BC- A□S- 081107- 2501	Ø25	1 HOLE	80 x 110 x 70	3.15 x 4.33 x 2.76	20	50	57
BC- A□S- 081108- 2501			80 x 110 x 85	3.15 x 4.33 x 3.35	35	50	72
BC- A□S- 081307- 2502		2 HOLE	80 x 130 x 70	3.15 x 5.12 x 2.76	20	50	57
BC- A□S- 081308- 2502			80 x 130 x 85	3.15 x 5.12 x 3.35	35	50	72
BC- A□S- 081807- 2503		3 HOLE	80 x 180 x 70	3.15 x 7.09 x 2.76	20	50	57
BC- A□S- 081808- 2503			80 x 180 x 85	3.15 x 7.09 x 3.35	35	50	72
BC- A□S- 082507- 2504		4 HOLE	80 x 250 x 70	3.15 x 9.84 x 2.76	20	50	57
BC- A□S- 082508- 2504			80 x 250 x 85	3.15 x 9.84 x 3.35	35	50	72
BC- A□S- 081107- 3001	Ø30	1 HOLE	80 x 110 x 70	3.15 x 4.33 x 2.76	20	50	57
BC- A□S- 081108- 3001			80 x 110 x 85	3.15 x 4.33 x 3.35	35	50	72
BC- A□S- 081307- 3002		2 HOLE	80 x 130 x 70	3.15 x 5.12 x 2.76	20	50	57
BC- A□S- 081308- 3002			80 x 130 x 85	3.15 x 5.12 x 3.35	35	50	72
BC- A□S- 081807- 3003		3 HOLE	80 x 180 x 70	3.15 x 7.09 x 2.76	20	50	57
BC- A□S- 081808- 3003			80 x 180 x 85	3.15 x 7.09 x 3.35	35	50	72
BC- A□S- 082507- 3004		4 HOLE	80 x 250 x 70	3.15 x 9.84 x 2.76	20	50	57
BC- A□S- 082508- 3004			80 x 250 x 85	3.15 x 9.84 x 3.35	35	50	72